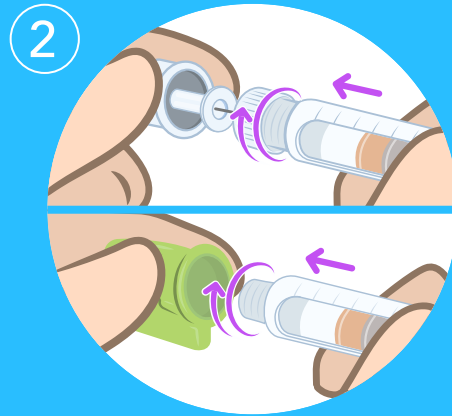


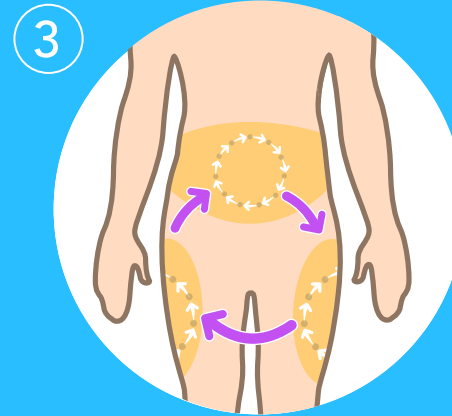
USER INSTRUCTIONS



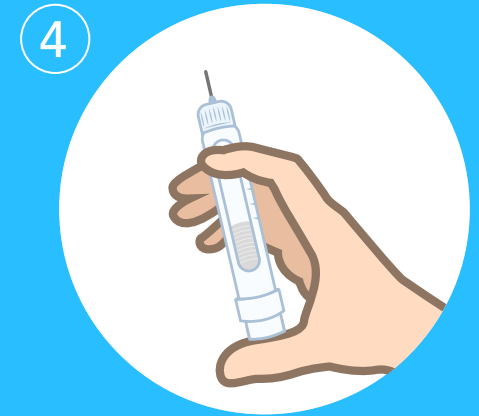
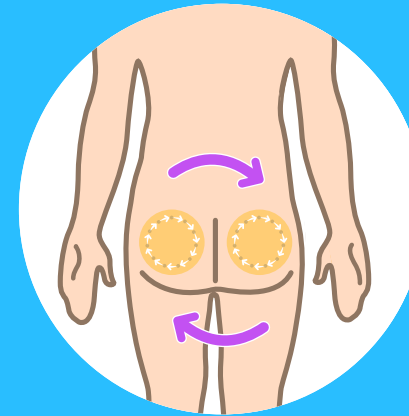
1 First wash your hands with soap and water.



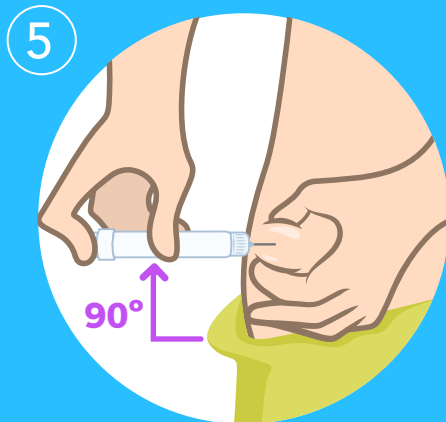
2 Attach a new needle onto the pen, then remove the shields.



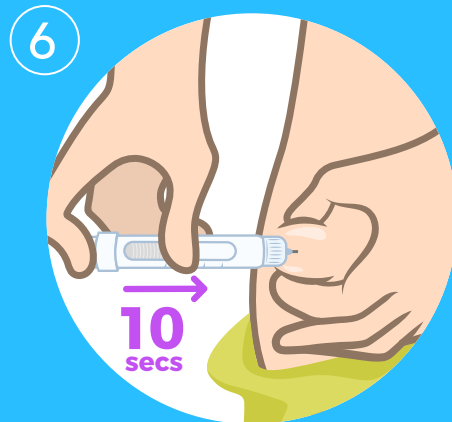
3 Make sure you rotate between injection sites for every new injection.



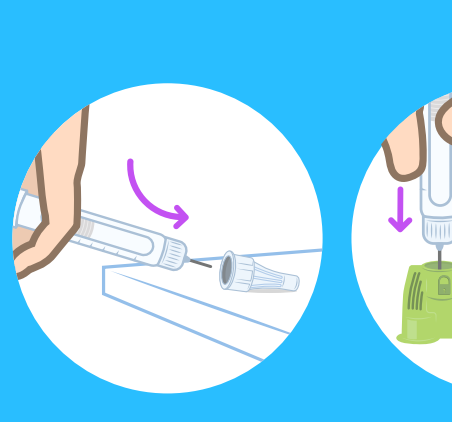
4 Prime your pen as recommended and dial the required dose.



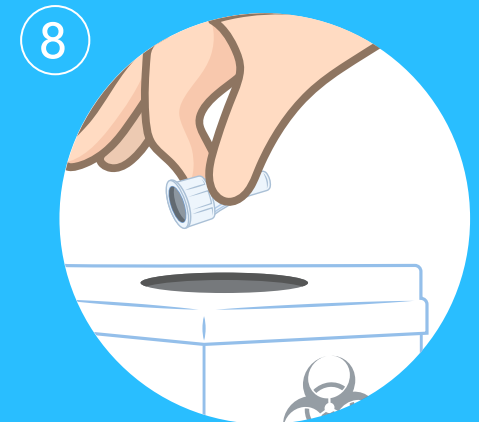
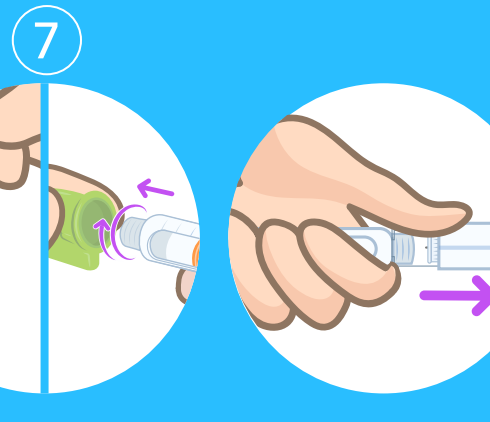
5 If recommended, pinch/fold your skin and insert the needle at a 90° angle.



6 Inject as recommended by your healthcare professional. Wait 10 seconds before removing needle from the skin.



7 To remove the needle, carefully replace the outer cap. Use either a scoop technique or push it into the removal system until it clicks using one or two handed techniques. If you are using a safety pen needle, push the safety guard away from you until it clicks.



8 Dispose of the needle in a suitable sharps container.